

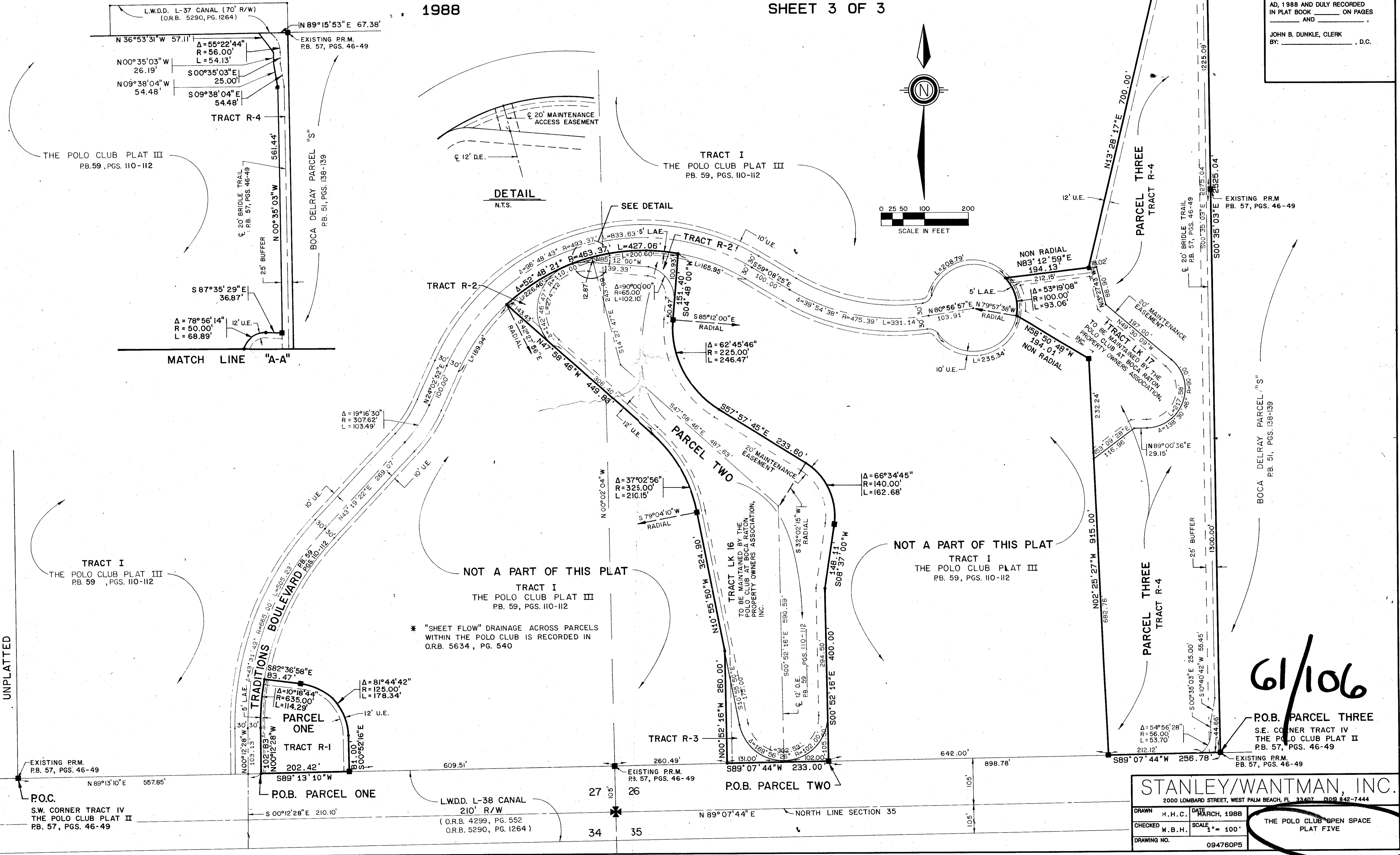
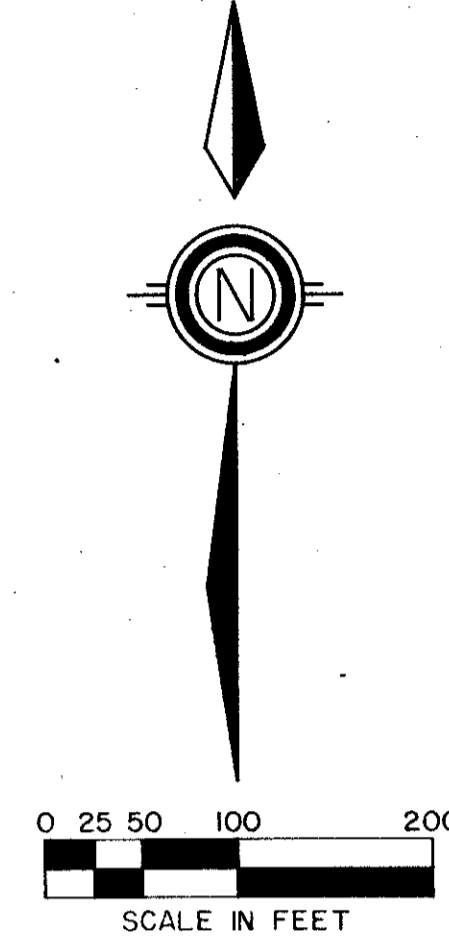
THE POLO CLUB OPEN SPACE PLAT FIVE

PART OF THE POLO CLUB P.U.D.
BEING A REPLAT OF A PORTION OF TRACT IV OF "THE POLO CLUB PLAT II" (P.B. 57 PGS. 46 - 49)
SITUATE IN SECTIONS 26 AND 27, TOWNSHIP 46 SOUTH, RANGE 42 EAST
PALM BEACH COUNTY, FLORIDA.

1988

SHEET 3 OF 3

STATE OF FLORIDA
COUNTY OF PALM BEACH
THIS PLAT WAS FILED FOR
RECORD _____ DAY OF _____
AD, 1988 AND DULY RECORDED
IN PLAT BOOK _____ ON PAGES
_____ AND _____
JOHN B. DUNKLE, CLERK
BY: _____, D.C.



DETAIL
N.T.S.

SEE DETAIL

SCALE IN FEET

NOT A PART OF THIS PLAT

NOT A PART OF THIS PLAT
TRACT I
THE POLO CLUB PLAT III
PB. 59, PGS. 110-112

* "SHEET FLOW" DRAINAGE ACROSS PARCELS
WITHIN THE POLO CLUB IS RECORDED IN
O.R.B. 5634, PG. 540

61/106

STANLEY/WANTMAN, INC.
2000 LOMBARD STREET, WEST PALM BEACH, FL 33407 (305) 842-7444

DRAWN	M.H.C.	DATE	MARCH, 1988
CHECKED	W.B.H.	SCALE	1" = 100'
DRAWING NO.	094760P5		

THE POLO CLUB OPEN SPACE PLAT FIVE

Polo Club Open Space #5
61
106
220B
RS/LTS 84-71
33445
TAX 477
26x27/16/12

UNPLATTED